

# MONTHLY MEMBERSHIP PROGRESS REPORT

LOCATION ENGLAND

District 105CN

Results as of: 2/28/2022

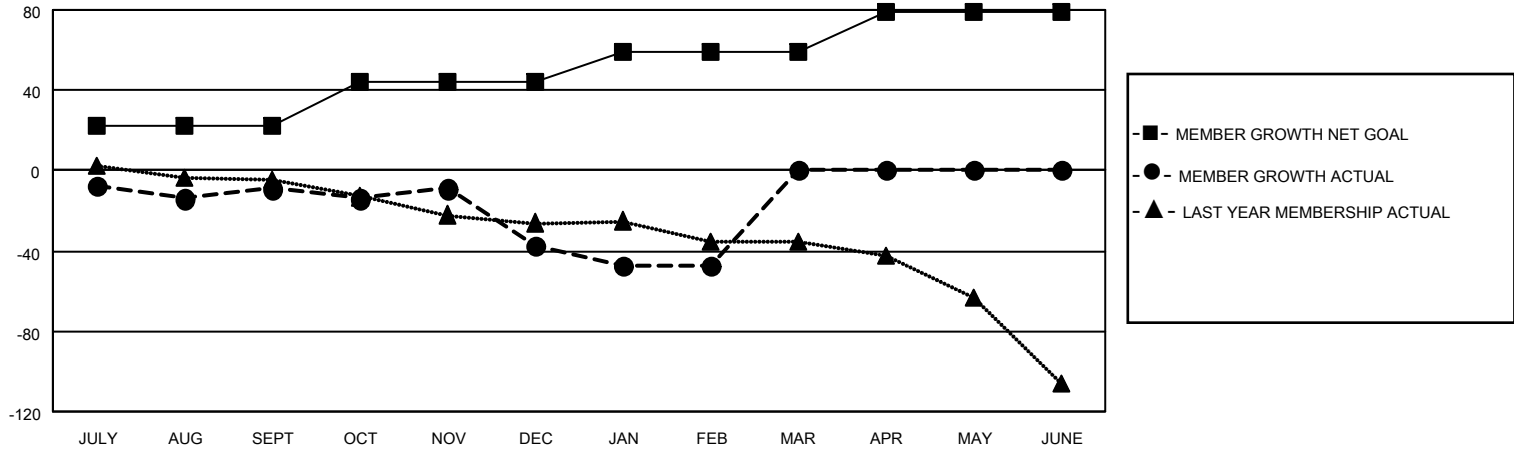
Clubs			
RESULTS FOR 2021-2022			
QUARTER	NEW CLUB GOAL	NEW CLUBS	DROPPED CLUBS
JULY/AUG/SEPT	0	0	2
OCT/NOV/DEC	0	0	0
JAN/FEB/MAR	0	0	1
APR/MAY/JUNE	1	0	0

Members			
RESULTS FOR 2021-2022			
QUARTER	MEMBER GROWTH NET GOAL	MEMBER GROWTH ACTUAL	DROPPED MEMBERS ACTUAL (including transfers)
JULY/AUG/SEPT	22	14	19
OCT/NOV/DEC	22	30	47
JAN/FEB/MAR	15	16	23
APR/MAY/JUNE	20	0	0

**GOALS AND ACTUAL NEW CLUBS CUMULATIVE**



**GOALS AND ACTUAL MEMBERS CUMULATIVE**



DROPPED CLUBS: 3	
<u>DROPPED MEMBERS</u>	
DECEASED	12
CLUB CANCELLED	0
OTHER	77
<b>TOTAL</b>	<b>89</b>

29 CLUBS OF 94 ADDED 1 OR MORE NEW MEMBERS

[CLICK HERE FOR CUMULATIVE MEMBERSHIP DATA](#)

<u>GENDER DISTRIBUTION</u>	
MALE	862 (67.77%)
FEMALE	410 (32.23%)
NON BINARY	0 (0.00%)
PREFER NOT TO ANSWER	0 (0.00%)
<b>TOTAL FAMILY UNIT MEMBERS</b>	<b>235</b>
<b>FAMILY MEMBERS PAYING HALF DUES</b>	<b>121</b>